

Poston Scale Packet

Euphonium B.C.

Jenn Bock

Concert F Major

One Octave Scale and Arpeggio



Full Range Scale



Scale in Thirds



Arpeggio Exercise



Concert Bb Major

One Octave Scale and Arpeggio



Full Range Scale



Scale in Thirds



Arpeggio Exercise



Concert Eb Major

One Octave Scale and Arpeggio



Full Range Scale



Scale in Thirds

Arpeggio Exercise

Concert Ab Major

One Octave Scale and Arpeggio

Full Range Scale

Scale in Thirds

Arpeggio Exercise

Concert Db Major

One Octave Scale and Arpeggio

Full Range Scale

Scale in Thirds

Arpeggio Exercise

Concert Gb (F#) Major

One Octave Scale and Arpeggio

Musical notation for the one octave scale and arpeggio in Concert Gb (F#) Major. The scale is written in bass clef with a key signature of two flats (Bb and Eb) and a common time signature. It consists of an ascending eighth-note scale followed by a descending eighth-note scale, and a whole-note arpeggio.

Full Range Scale

Musical notation for the full range scale in Concert Gb (F#) Major. It features a continuous eighth-note scale across two octaves, starting from the second line of the bass clef and ending on the second space.

Scale in Thirds

Musical notation for the scale in thirds in Concert Gb (F#) Major. It consists of two parallel eighth-note lines, one starting on the second line and the other on the second space, moving together across two octaves.

Arpeggio Exercise

Musical notation for the arpeggio exercise in Concert Gb (F#) Major. It features a sequence of eighth-note arpeggios across two octaves, starting from the second line and ending on the second space.

Concert B Major

One Octave Scale and Arpeggio

Musical notation for the one octave scale and arpeggio in Concert B Major. The scale is written in bass clef with a key signature of three sharps (F#, C#, G#) and a common time signature. It consists of an ascending eighth-note scale followed by a descending eighth-note scale, and a whole-note arpeggio.

Full Range Scale

Musical notation for the full range scale in Concert B Major. It features a continuous eighth-note scale across two octaves, starting from the second line of the bass clef and ending on the second space.

Scale in Thirds

Musical notation for the scale in thirds in Concert B Major. It consists of two parallel eighth-note lines, one starting on the second line and the other on the second space, moving together across two octaves.

Arpeggio Exercise

Musical notation for the arpeggio exercise in Concert B Major. It features a sequence of eighth-note arpeggios across two octaves, starting from the second line and ending on the second space.

Concert E Major

One Octave Scale and Arpeggio

Musical notation for the one octave scale and arpeggio in Concert E Major. The scale is written in bass clef with a key signature of three sharps (F#, C#, G#) and a common time signature. It consists of an ascending eighth-note scale followed by a descending eighth-note scale, and a whole-note arpeggio.

Full Range Scale

Musical notation for the full range scale in Concert E Major. It features a continuous eighth-note scale across two octaves, starting from the second line of the bass clef and ending on the second space.

Scale in Thirds

Musical notation for the scale in thirds in Concert E Major. It consists of two parallel eighth-note lines, one starting on the second line and the other on the second space, moving together across two octaves.

Arpeggio Exercise

Musical notation for the arpeggio exercise in Concert E Major. It features a sequence of eighth-note arpeggios across two octaves, starting from the second line and ending on the second space.

Concert A Major

One Octave Scale and Arpeggio



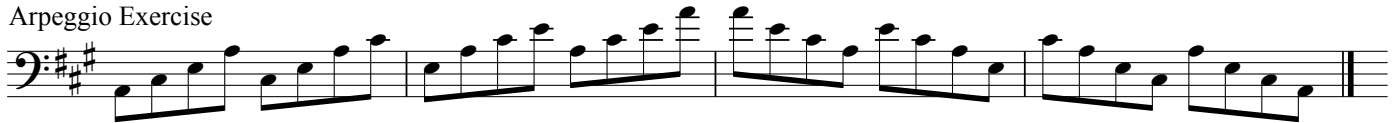
Full Range Scale



Scale in Thirds



Arpeggio Exercise

**Concert D Major**

One Octave Scale and Arpeggio



Full Range Scale



Scale in Thirds



Arpeggio Exercise

**Concert G Major**

One Octave Scale and Arpeggio



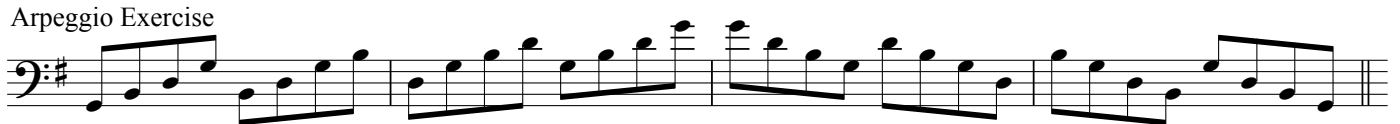
Full Range Scale



Scale in Thirds



Arpeggio Exercise



Concert C Major

One Octave Scale and Arpeggio



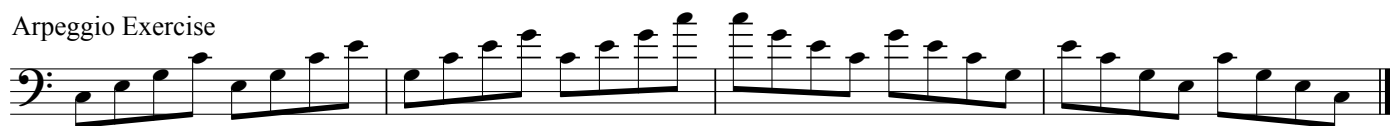
Full Range Scale



Scale in Thirds



Arpeggio Exercise

**Concert Bb Chromatic Scale- One Octave****Concert F Chromatic****Full Range Chromatic**